

PBS Works 13.1

Release Notes



 Altair | PBS Works™

PBS Works is a division of  Altair

Intellectual Property Rights Notice: Copyrights, Trademarks, and Third Party Licenses

Updated: September 22, 2016

Altair® PBS Works™ 13.1

Enabling On-Demand Computing™

Copyright© 1994-2016 Altair Engineering Inc. All Rights Reserved.

Special Notice: Pre-release versions of Altair software are provided 'as is', without warranty of any kind. Usage is strictly limited to non-production purposes.

Compute Manager™ 2007-2016; Display Manager™ 2007-2016; PBS™ 1994-2016; PBS Professional® 1994-2016; PBS Application Services™ 2008-2016; PBS Analytics™ 2007-2016; and PBS Desktop™ 2007-2012; PBS Portal™ 2007-2011; e-BioChem™ 2007-2013; e-Compute™ 2000-2007; e-Render™ 2006-2010; OpenPBS® 1994-2003 and Personal PBS® 2007-2012.

Other Altair software applications include:

Altair Simulation Cloud Suite: Simulation Manager™ 2003-2016; Compute Manager™ 2003-2016; Display Manager™ 2003-2016; and Process Manager™ 2003-2016.

Altair HyperWorks®: HyperMesh® 1990-2016; HyperCrash® 2001-2016; OptiStruct® 1996-2016; RADIOSS® 1986-2016; HyperView® 1999-2016; HyperView Player® 2001-2016; HyperStudy® 1999-2016; HyperGraph® 1995-2016; MotionView® 1993-2016; MotionSolve® 2002-2016; HyperForm® 1998-2016; HyperXtrude® 1999-2016; Process Manager™ 2003-2016; Templex™ 1990-2016; TextView™ 1996-2016; MediaView™ 1999-2016; TableView™ 2013-2016; BatchMesher™ 2003-2016; HyperMath® 2007-2016; HyperWeld® 2009-2016; HyperMold® 2009-2016; Manufacturing Solutions™ 2005-2016; solidThinking® 1993-2016; solidThinking Inspire® 2009-2016; solidThinking Evolve® 1993-2016; Durability Director™ 2009-2016; Suspension Director™ 2009-2016; AcuSolve® 1997-2016; AcuConsole® 2006-2016; SimLab® 2004-2016; Virtual Wind Tunnel™ 2012-2016; FEKO™ (©1999-2014 Altair Development S.A. (Pty) Ltd.; ©2014-2016 Altair Engineering, Inc.); MDS™ 2011-2016 and VisSim™ 1989-2016.

Altair Packaged Solution Offerings (PSOs) Copyright© 2008-2016

Automated Reporting Director™ 2008-2016; Impact Simulation Director™ 2010-2016; Model Mesher Director™ 2010-2016; Model Verification Director™ 2013-2016; Squeak and Rattle Director™ 2012-2016; Virtual Gauge Director™ 2012-2016; Weld Certification Director™ 2014-2016.

Altair intellectual property rights are protected under U.S. and international laws and treaties. Additionally, Altair software is protected under patent #6,859,792 and other patents pending. All other marks are the property of their respective owners.

ALTAIR ENGINEERING INC. Proprietary and Confidential. Contains Trade Secret Information. Not for use or disclosure outside of Altair and its licensed clients. Information

contained in Altair software shall not be decompiled, disassembled, “unlocked”, reverse translated, reverse engineered, or publicly displayed or publicly performed in any manner. Usage of the software is only as explicitly permitted in the end user software license agreement. Copyright notice does not imply publication.

Third Party Licenses

AcuConsole contains material licensed from Intelligent Light (www.ilight.com) and used by permission.

Software Security Measures:

Altair Engineering Inc. and its subsidiaries and affiliates reserve the right to embed software security mechanisms in the Software for the purpose of detecting the installation and/or use of illegal copies of the Software. The Software may collect and transmit non-proprietary data about those illegal copies. Data collected will not include any customer data created by or used in connection with the Software and will not be provided to any third party, except as may be required by law or legal process or to enforce our rights with respect to the use of any illegal copies of the Software. By using the Software, each user consents to such detection and collection of data, as well as its transmission and use if an illegal copy of the Software is detected. No steps may be taken to avoid or detect the purpose of any such security mechanisms.

Technical Support

Contact technical support based on your location by phone or email.

Location	Telephone	Email
Australia	+1 800 174 396	anz-pbssupport@india.altair.com
China	+86 21 6117 1666	es@altair.com.cn
France	+33 1 4133 0992	pbssupport@europe.altair.com
Germany	+49 7031 6208 22	pbssupport@europe.altair.com
India	+91 80 66 29 4500 +1 800 425 0234 (Toll Free)	pbs-support@india.altair.com
Italy	+39 800 905595	pbssupport@europe.altair.com
Japan	+81 3 5396 2881	pbs@altairjp.co.jp
Korea	+82 70 4050 9200	pbs@altair.co.kr
Malaysia	+91 80 66 29 4500 +1 800 425 0234 (Toll Free)	pbs-support@india.altair.com
North America	+1 248 614 2425	pbssupport@altair.com
Russia	+49 7031 6208 22	pbssupport@europe.altair.com
Scandinavia	+46 46 460 2828	pbssupport@europe.altair.com
Singapore	+91 80 66 29 4500 +1 800 425 0234 (Toll Free)	pbs-support@india.altair.com
South America	+55 11 3884 0414	br_support@altair.com
UK	+44 1926 468 600	pbssupport@europe.altair.com

This document is proprietary information of Altair Engineering, Inc.

PBS Works Release Notes

These release notes describe the new features, bug fixes, and known issues for PBS Works 13.1. Please see the following sections for more information:

- [About PBS Works](#)
- [PBS Works Product Suite](#)
- [Supported Platforms](#)
- [Supported Browsers](#)
- [Upgrade, Compatibility and Installation Considerations](#)
- [New Features](#)
- [Resolved Issues](#)
- [Known Issues](#)

About PBS Works

PBS Works™, Altair's suite of on-demand cloud computing technologies, allows enterprises to maximize Return On Investment (ROI) on existing infrastructure assets. PBS Works is the most widely implemented software environment for managing grid, cloud, and cluster computing resources worldwide. Compute Manager (CM), Display Manager (DM), Results Visualization Service (RVS) and Access Management Service (AMS) are available as part of the PBS Works Suite.

To obtain the latest release package, contact your Altair sales representative by writing to sales@altair.com or support@altair.com. For more information, visit us at www.pbsworks.com.

PBS Works Product Suite

The following applications are available in the PBS Works product suite:

- **Compute Manager:** Web-based portal for simplified job submission and management
- **Display Manager:** Web-based portal for remote visualization and collaboration
- **Results Visualization Service:** A service for visualizing plots and 3D animations using the HyperView Player browser plugin.
- **Access Management Service:** A service for defining users, groups, and access control policies.

Supported Platforms

PBS Works is supported on the following platforms:

Windows 64bit

- Windows Server 2008 R2
- Windows Server 2012
- Windows Server 2012 R2

Linux 64bit

- Red Hat Enterprise Linux (RHEL) 5, 6, and 7
- CentOS 5, 6, and 7
- SUSE Linux Enterprise Server (SLES) 11 and 12

Supported Browsers

PBS Works is supported on the following browsers:

- Google Chrome 44, 50, and 52
- Firefox 45.3 (32 bit) Extended Support Release (ESR) is supported. Please refer to <https://www.mozilla.org/en-US/firefox/organizations/>.
- Internet Explorer 11
- Safari 8.x and 9.x

The HyperView Player plugin is required for visualizing 3D animation. The Altair HyperView Player plugin used by RVS is available at the [download area](#) of Compute Manager and PBS Works.

Certain functionalities of RVS and DM are available only when the Java Extensions are available on the client and/or web browser in use.

Download the latest JRE version from <https://java.com/en/download/>.

For information about installing Java, refer to http://www.java.com/en/download/help/download_options.xml.

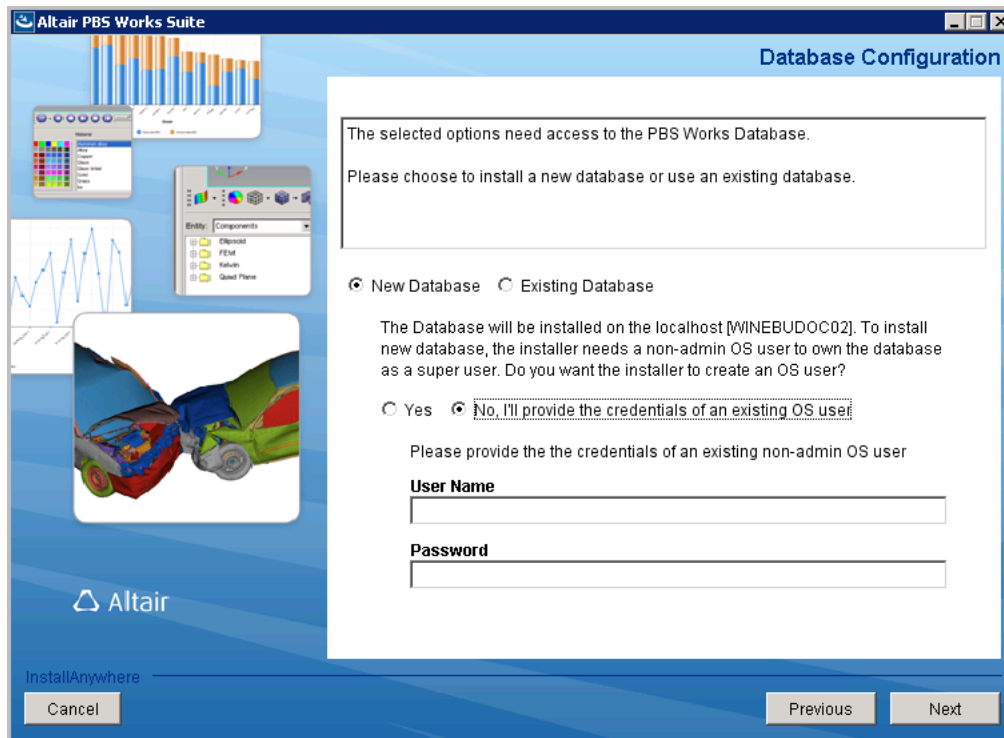
To enable Java, refer to http://www.java.com/en/download/help/enable_browser.xml.

For troubleshooting the Java installation, refer to http://www.java.com/en/download/help/troubleshoot_java.xml.

Upgrade, Compatibility and Installation Considerations

You must uninstall previous versions of PBS Works before attempting to install a new version. Please refer to the *PBS Works 13.1 Administrator's Guide* for information about installing PBS Works. Refer to the *Results Visualization Service 13.1 Administrator's Guide* for installing RVS.

Please note, that during the installation of PBS Works two database options are available. You may choose to install a new database or point to an existing database. It is highly recommended to choose the new database instance.



To configure installed applications, refer to the following Administrator's Guides:

- *Compute Manager 13.1 Administrator's Guide*
- *Display Manager 13.1 Administrator's Guide*
- *Results Visualization Service 13.1 Administrator's Guide*

New Features

This section provides information about the new features of PBS Works 13.1:

- [Single Sign-On](#)
- [HTML5 Viewer Support](#)
- [Enhanced Notifications](#)
- [Improved Portal Structure](#)
- [Migration to Tomcat 8](#)
- [Migration to Java 8](#)
- [Expression Editor](#)
- [Annotate, Print, and Download Plots](#)
- [Improved Visibility of Curves and Data Points](#)
- [Plotting CSV Files](#)

Single Sign-On

Single Sign-On (SSO) permits a user to use one set of credentials to access multiple PBS Works applications. PBS Works can be configured to use SSO during installation.

For more information, see the Enabling Single Sign-On section in the *PBS Works 13.1 Administrator's Guide*.

HTML5 Viewer Support

DM 13.1 has added HTML5 Viewer support for VNC and RDP for remote desktop viewing. You can enable HTML5 View Mode for an application by editing its application definition file.

For more information, see the HTML5 Viewer for VNC and RDP section in the *Display Manager 13.1 Administrator's Guide*.

Enhanced Notifications

PBS Works used to notify the user when certain tasks were performed and the notifications could be viewed by clicking the **Messages** link.

Notifications have been enhanced and are now displayed as popup messages. You can enable the notification popup in the **Settings** -> **General** menu. Messages are also displayed in the **Notifications Panel** which provides the following information:

- Type of notification (Error, Warning, Information)
- Priority of Event
- Application
- Date and Time

The enhanced notifications can now be sorted, arranged, searched and archived.

Improved Portal Structure

In PBS Works 13.1, the portal structure has been improved to separate the binaries from the configuration and log files. After a successful installation of PBS Works, the following main directory structures are created:

- **PBS Works home directory (CONFIG_HOME)** - where the PBS Works configuration and log files are stored.
The default location for CONFIG_HOME is:
on Windows: C:\altair\pbsworks\13.1\home
on Linux: /var/spool/pbsworks/13.1/home
- **PBS Works execution directory (SERVER_HOME)** - where the PBS Works binaries are stored.
The default location for SERVER_HOME is:
on Windows: C:\altair\pbsworks\13.1\exec
on Linux: /opt/altair/pbsworks/13.1/exec

Migration to Tomcat 8

To improve performance and security, PBS Works now uses Apache Tomcat 8.0x.

Migration to Java 8

To improve performance and security, PBS Works now uses JRE 1.8 (Java Runtime Environment).



The following are the new features of RVS 13.1.

Expression Editor

The Expression Editor feature enables you to derive a new curve using the existing result files and several predefined mathematical expressions.

Annotate, Print, and Download Plots

Improved plot options allows you to annotate, print, and download plots to local and remote locations. Additionally, you can save or download images in PNG, JPG, SVG, and PDF formats.

Improved Visibility of Curves and Data Points

You can change the color and thickness of the curves in a plot. You can also change the width of the data points in a curve.

Plotting CSV Files

RVS can read CSV files and display the values as a plot. The first column of entries in the CSV file are interpreted as X-axis values. Subsequent entries are interpreted as Y-axis values.

Resolved Issues

The following section provides the resolved issues in PBS Works Suite:

- [Compute Manager](#)
- [Display Manager](#)
- [Results Visualization Service](#)
- [Access Management Service](#)

Compute Manager

This section provides information about issues that have been resolved in Compute Manager:

- [CM-1262 Duplicate Files can be Added to the Job Submission Form](#)
- [CM-1324 Reference Links in the CM Help are not Displayed Properly in Chrome](#)
- [CM-1363 CM Activity Issues when Admin Password is Invalid](#)
- [CM-1715 Jobs are not Displayed when the PBS Server is Down](#)
- [CM-2744 Job goes into a “Waiting” State after Job Resubmission](#)
- [CM-2787 PBS Works Database is not Running After Installation](#)
- [CM-2792 Java out of Memory Errors Displayed in Log Files](#)
- [CM-2804 Local User with Admin Privileges is Unable to Perform Admin Tasks](#)
- [CM-2831 On Window Server 2008 R2, Multi-node Job Files are not Displayed](#)
- [CM-2835 Unable to Run a Custom Action after Upgrading to CM 13.0.1](#)

CM-1262 Duplicate Files can be Added to the Job Submission Form

Summary: CM allows duplicate files to be added to the **Job Submission** form using the **Add to Job Files** option from the file context menu and the job is submitted successfully.

Resolution: If a duplicate file is added to the **Job Submission** form, a message is displayed that states that the file will not be added as it already been added to the **Job Submission** form.

CM-1324 Reference Links in the CM Help are not Displayed Properly in Chrome

Summary: When you access the CM help using Google Chrome, the reference links at the top of the help pages do not display.

Resolution: The help HTML was not being parsed correctly through the application. The help HTML is now being served directly through the Apache Tomcat server.

CM-1363 CM Activity Issues when Admin Password is Invalid

Summary: When the PAS admin credentials are invalid, then any requests from CM to PAS server is delayed for a certain interval of time. This wait time is necessary, so that admin password does not get locked.

Resolution: A message is displayed to change the admin password. CM scheduler waits for a certain interval of time for a retry.

A new property `minFailedPASAdminCallInterval` is added in the `config.properties` file located at `HOME/services/cm/config/` to configure this wait time. By default, the wait time is 30 minutes and you can update this value as required.

CM-1715 Jobs are not Displayed when the PBS Server is Down

Summary: CM is unable to display jobs that were submitted to a PBS Professional complex when the PBS Server is down.

Resolution: When the PBS Server is down, the most recent job information is retained until the PBS Server is online and can be synced with CM.

CM-2744 Job goes into a "Waiting" State after Job Resubmission

Summary: After resubmitting a job, the job goes into a "Waiting" state and the error "Unable to copy file <filename>. No such file" is displayed in the qstat output for the job.

Resolution: This issue was caused when an input file from the original job was deleted. CM was not verifying the existence of the input file when the job was resubmitted. The existence of input files is now done prior to job resubmission. If a file is missing, then an error message is displayed and the job is not resubmitted.

CM-2787 PBS Works Database is not Running After Installation

Summary: The following message is displayed in the CM log file:

```
org.apache.commons.dbcp.SQLNestedException: Cannot create PoolableConnectionFactory  
(FATAL: password authentication failed for user "S-PBSADMIN")
```

Additionally, the PBS Works database is not running and the following message is displayed in the Postgres log file:

```
LOG: database system was shut down at 2016-02-16 15:25:38 CET  
ERROR: syntax error at or near "-" at character 13  
STATEMENT: ALTER USER S-PBSADMIN WITH PASSWORD 'S-PBSADMIN';
```

Resolution: The script that handles the start-up of the PBS Works database have been modified to handle a user name containing a dash.

CM-2792 Java out of Memory Errors Displayed in Log Files

Summary: The following error is displayed in the `cmlog.log` and `catalina.<date>.log` files:

```
java.lang.OutOfMemoryError: GC overhead limit exceeded
```

The applications become noticeably slower and then become unresponsive.

Resolution: This issue can be caused by insufficient Java heap memory. The default Java heap size has been increased to 4GB. To adjust the Java heap size, refer to “Changing Java Heap Memory in Linux” and “Changing Java Heap Memory in Windows” sections in *Compute Manager 13.1 Administrator's Guide*.

CM-2804 Local User with Admin Privileges is Unable to Perform Admin Tasks

Summary: A local user with administrator privileges is not able to perform administrative operations when the AMS datastore is populated with users via a connection to a Windows AD or an LDAP compatible server.

Resolution: PBS Works was attempting to retrieve username information from the LDAP/AD for the local user which is not stored in the LDAP/AD. If PBS Works cannot find the local user in the LDAP/AD, then it retrieves the information from the local server.

CM-2831 On Window Server 2008 R2, Multi-node Job Files are not Displayed

Summary: Jobs files are not displayed for multi-node jobs on the Job Monitoring page. The following error is displayed where the job files should be displayed:

```
com.altair.gw.aif.exceptions.OperationFailedException: FileList: unknown error happened, Error code: 1.
```

Resolution: The value of the multi-node job's execution host (exec_host) attribute was incorrectly parsed resulting in an invalid hostname. The exec_host attribute is now correctly parsed for multi-node jobs.

CM-2835 Unable to Run a Custom Action after Upgrading to CM 13.0.1

Summary: After upgrading to CM 13.0.1, the following message is displayed after attempting to run a custom action:

```
Submit application action Operation failed: Internal server error
```

Resolution: This issue is resolved in CM 13.1.

Display Manager

This section provides information about issues that have been resolved in Display Manager:

- [DM-613 Session is not Displayed for Interactive Jobs](#)
- [DM-679 DM Viewer Fails to Authenticate](#)
- [DM-725 One Time Password Dialog Displayed when Switching between Sessions](#)

DM-613 Session is not Displayed for Interactive Jobs

Summary: No session is displayed when you connect to a DM job that is submitted through CM.

Resolution: This issue is resolved and there is no problem with the DM session when connected through CM.

DM-679 DM Viewer Fails to Authenticate

Summary: The DM viewer fails with an authentication error when switching from one session to another.

Resolution: PBS Works has been upgraded to use Java 8 which resolved this issue.

DM-725 One Time Password Dialog Displayed when Switching between Sessions

Summary: A One Time Password dialog box is displayed when switching between sessions.

Resolution: DM 13.1 has added HTML5 Viewer support for VNC and RDP for remote desktop viewing. The HTML5 view mode removes the dependency of Java.

Results Visualization Service

This section provides information about issues that have been resolved in Results Visualization Service:

- [RVS-826 RVS Fails to Display Large TOC Result Files](#)

RVS-826 RVS Fails to Display Large TOC Result Files

Summary: RVS is unresponsive when rendering large result files with more than 50,000 data points.

Resolution: Now, for large results files, RVS recalculates and removes the data points at regular intervals while retaining the first data point and the last data point.

Access Management Service

This section provides information about issues that have been resolved in Access Management Service:

- [AMS-136 Session Timeout Configuration](#)
- [AMS-166 AMS is Unable to Connect to a LDAP/AD](#)
- [AMS-183 User Cannot Login to CM after Updating SSH ciphers Information](#)

AMS-136 Session Timeout Configuration

Summary: To configure the **Session Timeout** settings, the administrator must update three files: `web.xml`, `platform.xml` and `AA_Service.properties`.

Resolution: Now, only a single file `platform.conf` needs to be updated to configure the **Session Timeout**. This file is located at `CONFIG_HOME\framework\config`. After changing this setting, the PBS Works service must be restarted.

AMS-166 AMS is Unable to Connect to a LDAP/AD

Summary: Verification of the user and the group information fails due to a LDAP/AD connectivity issue.

Resolution: PBS Works was attempting to retrieve username information from the LDAP/AD for the local user which is not stored in the LDAP/AD. If PBS Works cannot find the local user in the LDAP/AD, then it retrieves the information from the local server.

AMS-183 User Cannot Login to CM after Updating SSH ciphers Information

Summary: After updating the SSH ciphers information in `sshd_config` file, user were not able to login to CM due to Java issues.

Resolution: AMS now supports the latest SSH ciphers.

Known Issues

This section provides information about known issues with PBS Works 13.1:

- [Compute Manager](#)
- [Display Manager](#)
- [Results Visualization Service](#)
- [Access Management Service](#)

Compute Manager

This section provides information about known issues with Compute Manager:

- [CM-1580 Non-required Arguments are Displayed when “Required” is Selected](#)
- [CM-2828 Files in the Job Submission Page are not Updated after Job Submission](#)
- [CM-2878 Manage Column Drop Down List is Hidden behind Job Listing panel](#)
- [CM-2882 More Action Button is Disabled after Exporting Jobs](#)
- [CM-2897 Local Dynamic Application does not work in IE 11 Browser](#)
- [CM-2906 Configuration Files are not Getting Updated when SSO is Disabled](#)
- [CM-2948 Columns Added to the Job Listing Panel do not get Exported](#)
- [CM-2953 Sorting is not Working in Job Monitoring Page](#)
- [CM-2980 Job Files are not Displayed when Job has more than 500 Files](#)
- [CM-3001 User's Password Containing the Special Character “€” cannot Log In](#)
- [CM-3005 Command to start/stop PBS Works do not Return Successful Messages](#)
- [CM-3008 Application Reference Exists in Home Folder after Uninstallation](#)
- [CM-3013 Cannot Submit a Job when Input File Pathname contains a “+”](#)
- [AWPF-1253 Notifications Count is Incremented after Disabling the Notifications](#)

CM-1580 Non-required Arguments are Displayed when “Required” is Selected

Summary: When the Java applet based uploader is in use, then non-required job arguments are showing up even if “**Required**” is selected. This occurs when the local dynamic application feature is enabled in the CM Settings and is associated with Java Applet related bugs.

Work Around: No workaround for this issue.

CM-2828 Files in the Job Submission Page are not Updated after Job Submission

Summary: The **Files** panel in the **Job Submission** page does not get updated after the job is submitted or completed until the **Refresh** button is clicked in the **Files** panel.

Work Around: No workaround for this issue.

CM-2878 Manage Column Drop Down List is Hidden behind Job Listing panel

Summary: When the **Job ID** and the **State** columns are displayed in the **Job Monitoring** page job list, the **Manage Column** drop down box is hidden behind the **Job Listing** panel. As a result, other columns cannot be added to the job list from the **Manage Columns** drop down list.

Work Around: Resize the **Job ID** and the **State** columns in the **Job Monitoring** page to view the **Manage Column** drop down list.

CM-2882 More Action Button is Disabled after Exporting Jobs

Summary: The **More Action** button gets disabled after exporting jobs.

Work Around: Refresh the page to enable the **More Actions** button.

CM-2897 Local Dynamic Application does not work in IE 11 Browser

Summary: Local dynamic application do not work in IE11 browser, due to Java applet limitation.

Work Around: No workaround for this issue.

CM-2906 Configuration Files are not Getting Updated when SSO is Disabled

Summary: Configuration files are not getting updated, when SSO is disabled on windows after service restart.

Work Around: After disabling SSO on windows, perform the following steps:

1. At the Windows command line prompt, navigate to `SERVER_HOME\scripts`
2. Enter `PBSWorksService remove`
3. Enter `PBSWorksService install`
4. Enter `PBSWorksService.bat start`

CM-2948 Columns Added to the Job Listing Panel do not get Exported

Summary: Columns that are added to the **Job Listing** panel do not get exported to the CSV files either from the **Export Selected Jobs** or from the **Export All Jobs** options.

Work Around: No workaround for this issue.

CM-2953 Sorting is not Working in Job Monitoring Page

Summary: Sorting is not working for the **State** column in the **Job Monitoring** page

Work Around: No workaround for this issue.

CM-2980 Job Files are not Displayed when Job has more than 500 Files

Summary: Using Firefox, job files are not getting displayed when there are more than 500 files for the job. The browser does not respond when you select the job.

Work Around: No workaround for this issue.

CM-3001 User's Password Containing the Special Character "€" cannot Log In

Summary: User's having a password containing the special character "€" cannot log in.

Work Around: Change the password of the user so that it does not contain the special character "€".

CM-3005 Command to start/stop PBS Works do not Return Successful Messages

Summary: On RHEL7 and CENTOS7 platforms, the following commands work correctly, but do not return any successful messages.

```
/etc/init.d/ start/stop/restart command
```

The following warning message is displayed when you execute the above command:

```
[root@VM13-VM1 ~]# /etc/init.d/pbsworks stop
Stopping pbsworks (via systemctl): Warning: pbsworks.service changed on disk. Run
'systemctl daemon-reload' to reload units.
[ OK ]

[root@VM13-VM1 ~]# /etc/init.d/pbsworks start
Starting pbsworks (via systemctl): Warning: pbsworks.service changed on disk. Run
'systemctl daemon-reload' to reload units.
```

Work Around: If you get a warning message as mentioned above after using the `/etc/init.d/ start/stop/restart` command, then use the command `systemctl daemon-reload`

CM-3008 Application Reference Exists in Home Folder after Uninstallation

Summary: The links to the application on the PBS Works login page do not work. A blank web page is displayed.

While uninstalling PBS Works, the user can choose to delete the PBS Works Home directory. If this directory is not removed, then upon installing PBS Works again, there may be references to applications in the HOME directory that were not installed during the second installation.

Work Around: No workaround for this issue.

CM-3013 Cannot Submit a Job when Input File Pathname contains a “+”

Summary: A job cannot be submitted when an input file's path contains a “+”. The filename is highlighted in red on the job submission form.

Work Around: No workaround for this issue.

AWPF-1253 Notifications Count is Incremented after Disabling the Notifications

Summary: After disabling Notifications, the user is alerted about new Notifications. The number next to the notification icon is incremented when new notifications are generated and the filtering is not applied for the notification count.

Work Around: No workaround for this issue.

Display Manager

This section provides information about known issues with Display Manager:

- [DM-296: Tooltips Issue in Chrome](#)
- [DM-752 DM applications did not Work](#)
- [DM-763 Edited Session Name is not Displayed when Connected from CM](#)
- [DM-786 The Application is not Displayed Properly in the Session Area](#)
- [DM-826 Application Components are Hidden Behind the Notification Panel](#)
- [DM-848 Applications are not Displayed due to Change in Admin Password](#)

DM-296: Tooltips Issue in Chrome

Summary: In Google Chrome, tooltips for the **Settings** menu, **Application Context** menu, and **Session Delete** gets hidden behind the application viewer.

Work Around: In DM 13.1, HTML5 view mode is supported for VNC and RDP for remote desktop. Choosing this view mode for the application will prevent this issue.

DM-752 DM applications did not Work

Summary: DM<13.1 does not work with PBS Pro >= 13.0 when execjob_launch hook is in use.

Resolution: No workaround for this issue.

DM-763 Edited Session Name is not Displayed when Connected from CM

Summary: When you edit the session name in DM and then connect the session through CM, then the edited session name is not displayed. The session changes back to the application name.

The edited session name remains changed when you log out and log in through DM.

Work Around: No workaround for this issue.

DM-786 The Application is not Displayed Properly in the Session Area

Summary: When a session is started in Firefox, the application gets displayed only at the top of the session area and the remaining area is rendered black.

Work Around: The application is rendered correctly once you refresh or resize the browser.

DM-826 Application Components are Hidden Behind the Notification Panel

Summary: When the **Notification** panel is opened, then the application component's Session area is hidden behind it.

Work Around: No workaround for this issue.

DM-848 Applications are not Displayed due to Change in Admin Password

Summary: If the admin password for any one of the registered PAS servers is changed or expired, then none of the applications are listed in DM.

The following error is displayed due to this issue:

```
com.altair.gw.aif.exceptions.NotAuthorizedException: java.util.concurrent.Execution-  
Exception: javax.security.auth.login.FailedLoginException: Authentication failed:  
javax.security.auth.login.LoginException: Authentication Failed: SSH connect failed:  
com.jcraft.jsch.JSchException: Packet corrupt
```

Work Around: The Admin password has to be corrected for the registered PAS server.

Results Visualization Service

This section provides information about known issues with Results Visualization Service:

- [RVS-264 Series of Result Files are Not Copied](#)
- [RVS-323 H3D Output Cannot be Extracted from MBD, Flex and .MAF Files](#)
- [RVS-330 Unable to Invoke HVP Browser-Plugin in Linux 64-bit Browsers](#)
- [RVS-1020 The Auto Refresh Cycles of a Running Job are Loading in Parallel](#)

RVS-264 Series of Result Files are Not Copied

Summary: On Windows Server, result files in a series cannot be viewed if the job directories are not directly accessible.

Work Around: The job directories have to be mapped to the server.

RVS-323 H3D Output Cannot be Extracted from MBD, Flex and .MAF Files

Summary: The H3D output from MBD, Flex and .MAF are not supported for extracting animation.

Note: Not all file formats supported in HyperWorks desktop products are supported in Results Visualization Service.

RVS-330 Unable to Invoke HVP Browser-Plugin in Linux 64-bit Browsers

Summary: On Linux platforms, the HVP plug-in does not work on x86_64 architecture browsers.

Work Around: Use a browser version of x86 architecture.

RVS-1020 The Auto Refresh Cycles of a Running Job are Loading in Parallel

Summary: The auto refresh cycles of a running job are not displaying the real-time updates at set values. By default, the auto refresh intervals are set to smaller values.

Work Around: Increase the Auto Refresh interval for plots to 120 seconds and animation to 300 seconds. These higher values would provide enough time to complete a refresh cycle.

Access Management Service

This section provides information about known issues with Access Management Service:

- [AMS-232 Login Popup is Displayed Repeatedly](#)

AMS-232 Login Popup is Displayed Repeatedly

Summary: Login popup is displayed repeatedly while accessing the portal in Firefox or Chrome browser when SSO is not configured in the browser.

Work Around: Change the domain value in the `krb5.conf` file located in the directory `CONFIG_HOME\AMS\AAServiceHome\config` to uppercase.

For more information on SSO configuration, see the Enabling Single Sign-On section in the *PBS Works 13.1 Administrator's Guide*.